

The Future for Christ Church



Our Project

Discover Christchurch!

History, architecture, heritage and wildlife

Community Spaces

Community worship, arts, exhibition, concerts and school engagement

Restoration

Clock, wall paintings and lighting

Essential Amenities

Kitchen and toilets

Traditional Crafts

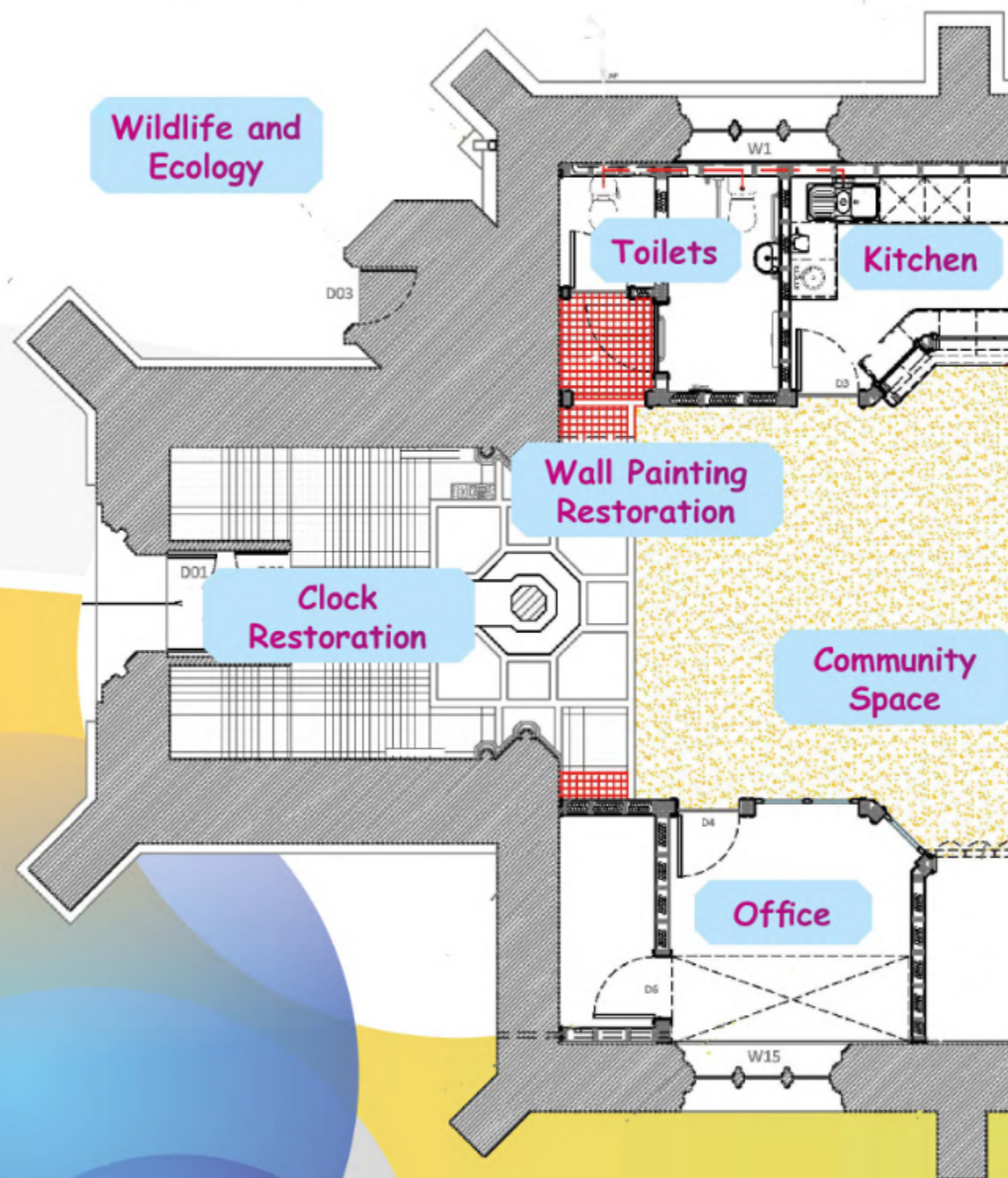
Stonework, painting

The Future for Christ Church

A **thriving and sustainable** community hub fit for the 21st Century:

- Open, welcoming and accessible to all
- Flexible spaces to facilitate a diversity of community uses
- Energy efficient adjustable lighting
- On site toilets and a kitchen, and
- An in-house office and plenty of storage

Below is an annotated copy of the architect's proposed plan highlighting the new and restored features which address these issues and open up opportunities for the future:



Discover Christ Church!

An inclusive intergenerational project co-designed with young people to find, explore, reveal, restore and share the hidden heritage on our doorstep'

We Need Your Help ...

Christ Church Friends are raising money for this exciting update and restoration of this beautiful church and to make it fit for a thriving and active community. The costs in delivering this project are quite substantial and while some of this is available, a fundraising process is already place and relevant funding sources are being explored. You may have noticed some of the fundraising projects over recent months - tableaux in the porch, plant and produce sales.

For details on how you can help, please turn over and find details on the back page.

Project Details and Costs



Community spaces Problem: Inflexible wall to wall pews severely limit uses. **Solution:** Remove pews to create open areas to front and back.



Kitchen Problem: we have no kitchen to host hospitality and events. **Solution:** provide a new enclosed kitchen that will not disturb the nave.



Toilets Problem: we have no on-site toilets. **Solution:** provide new accessible toilets. **Combined Cost:** £135.5k (remove pews, install kitchen & toilets).



Wall paintings Problem: important wall paintings, stonework and walls are damaged, dirty and dull. **Solution:** A specialist restoration scheme for the nave. **Cost:** £50k



Lighting Problem: the nave lighting is broken and key wall paintings are unlit. **Solution:** fit new energy efficient lighting for a variety of uses & to highlight the wall paintings. **Cost:** £30k



Clock restoration Problem: the clock mechanism is broken and the faces are rusting. **Solution:** provide a new mechanism and regild the clock faces. **Cost:** £19k



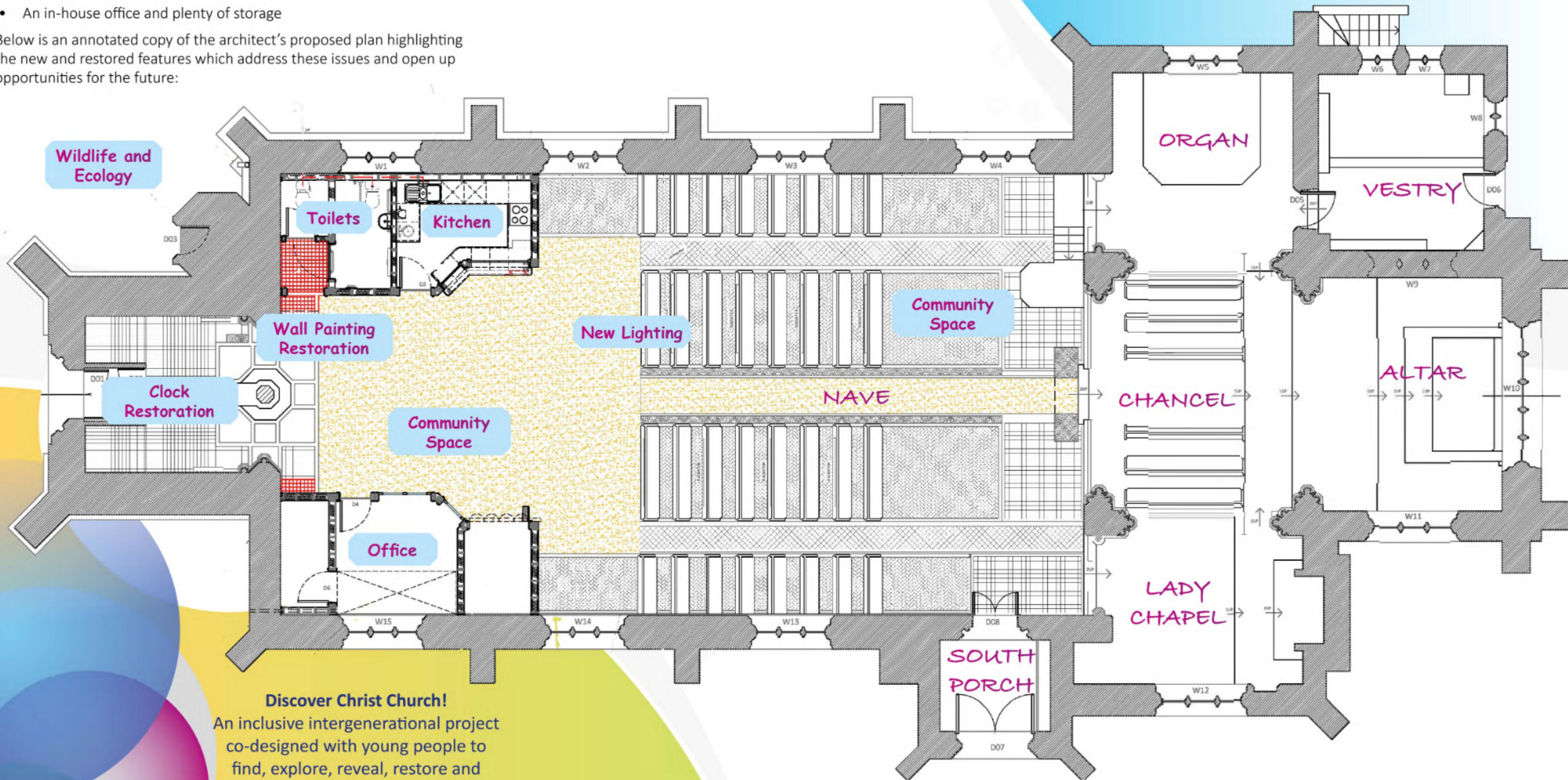
Office and Storage Problem: we have to pay office rent and stored items clutter the church. **Solution:** provide an in house office and storage. **Cost:** £39.5k

The Future for Christ Church

A **thriving and sustainable** community hub fit for the 21st Century:

- Open, welcoming and accessible to all
- Flexible spaces to facilitate a diversity of community uses
- Energy efficient adjustable lighting
- On site toilets and a kitchen, and
- An in-house office and plenty of storage

Below is an annotated copy of the architect's proposed plan highlighting the new and restored features which address these issues and open up opportunities for the future:



Discover Christ Church!
An inclusive intergenerational project co-designed with young people to find, explore, reveal, restore and share the hidden heritage on our doorstep'

Our heritage rediscovered and on the map:

- Restored wall paintings, cleaned stonework and historic features and artefacts for all to enjoy
- Outside our regilded and restarted steeple clock and enhanced biodiversity in the churchyard will reflect the restored heritage and new life within
- Interpretation in the church and on the web will promote our heritage and social history, encouraging more people to **Discover Christ Church!**

Join us in this Community Project

The total cost of the projects is approaching £300k and while the Parish Church Council has agreed to contribute a substantial sum, it is necessary that we apply for grants, and pursue fund raising to deliver this ambitious and important project. So, to fulfil this challenge, **we need community help and support for the Future for Christ Church vision to become a reality, and for Christ Church to once again become a vibrant and well-used place at the heart of our community.**

We would very much welcome both financial support and in kind support:

- Donations directly to the project
- For supporters to give of your skills or time

Contact Details



Christ Church
Office 2, 1A Mount Pleasant,
Bradford-on-Avon
BA15 1SJ



nboabenefice@gmail.com



www.nboachurches.co.uk